



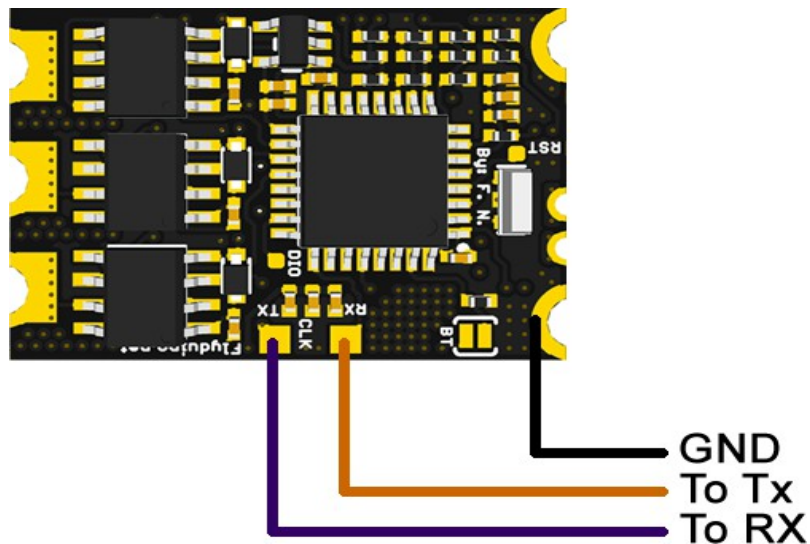
KISS24A RE Special functions

This Manual is not needed to get the KISS ESC 24A RE to work!
It just shows some extra functions for those who like to use them.

CLI (Commandline Interface)

The KISS ESC 24A RE can be used with a USB<->UART to setup the current limit or view the telemetry.

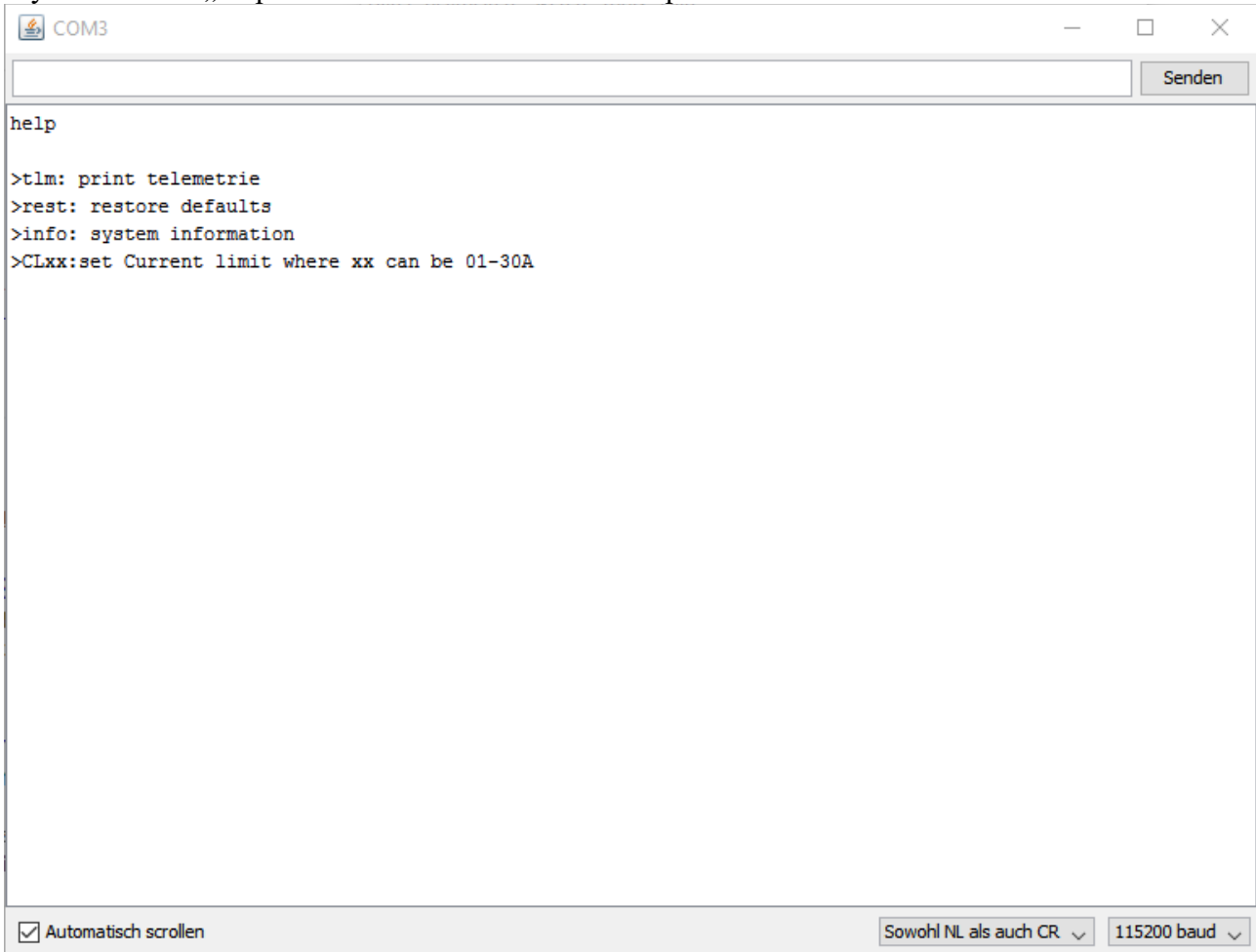
Connect the USB UART



important: to use the KISS ESC with a USB Uart on a Computer you need to power the KISS ESC at the same time, or later then the USB uart. Like this it can detect the serial full duplex mode.

After the ESC is powered the CLI mode will be enabled after 5 seconds.
Then you can talk to it with a serial monitor (f.e. Arduino Serialmonitor with linewarp) and 115200 baud

if you enter f.e. „help“ the ESC will answer with the possible commands



caution: on commands that cause a reset of the ESC you will need to wait again 5S after reset till it will answer.

Fallback PWM Input

The RX pad on its bottom side can be used as fallback PWM input pin. Connect a valid PWM source (servo signal) that can be normal PWM, oneshot125 or oneshot42. This fallback signal will be used when the main signal becomes invalid.